

Video 12 of 21: Weighting

Overview of the basic steps in weighting

Sampling



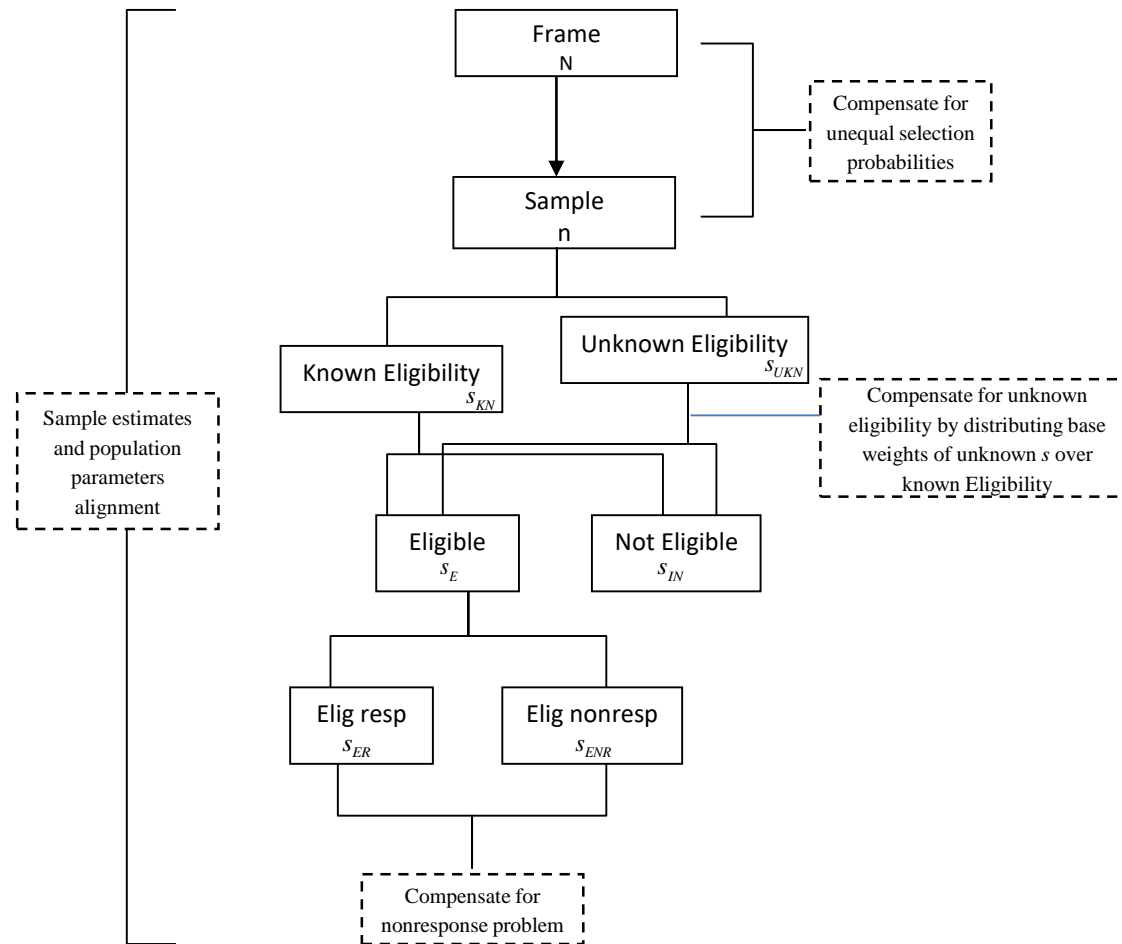
THE WORLD BANK

MANNHEIM
BUSINESS SCHOOL

Survey weighting

- In general, weights are designed to
 - Compensate for unequal selection probabilities
 - Base/design weights, adjustment for multiplicity and within household selection, frame integration
 - Adjust for unknown eligibility
 - Adjust for non-sampling errors
 - Non-response and coverage issues
 - Incorporate external data to improve the precision of the survey estimates and further mitigate for non-sampling errors
- Basic weighting steps are usually similar for different types of data collection modes

General steps used in weighting



END OF VIDEO 12