



RACHEL HALSEMA
ITS Tech &
Innovation Lab

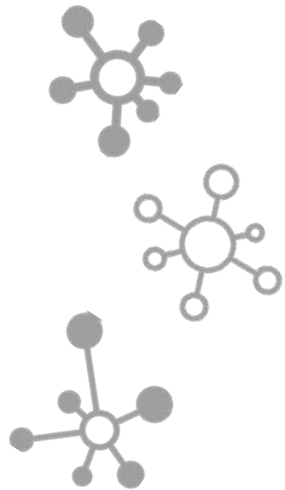


ITS Technology & Innovation Unit/Lab Overview

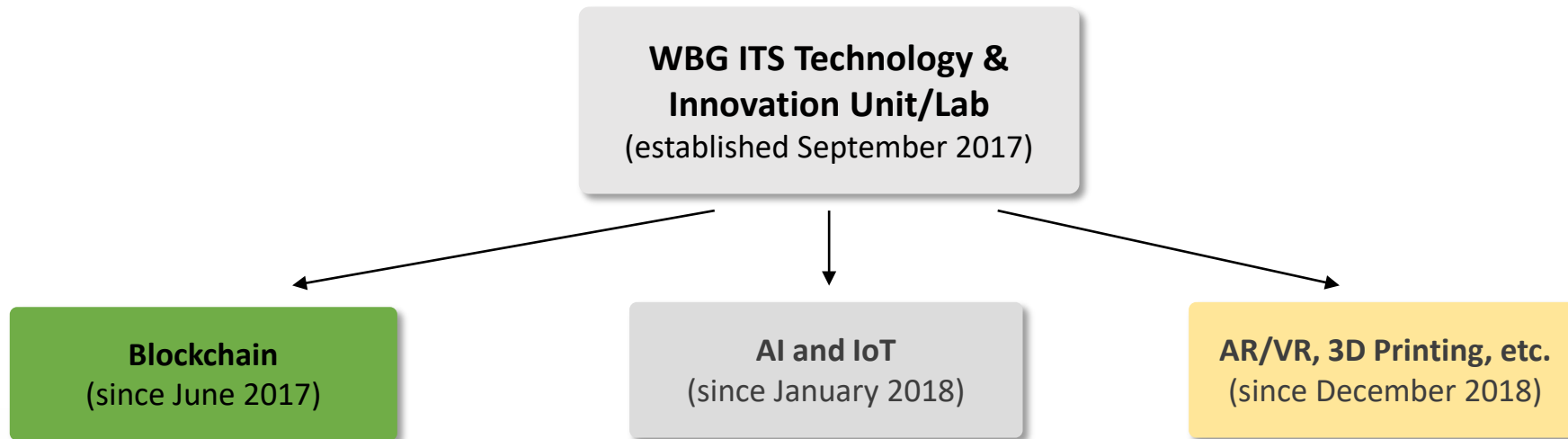
ITS Technology & Innovation Unit/Lab's Mandate



Learning platform. Exploration space.
Technology advice around Emerging Technologies.



We **EXPLORE**, **TEST**, **UNDERSTAND** and **CREATE INTERNAL KNOW-HOW** about new technology capabilities that will enable the WBG to be **FUTURE READY** and **competitive in the digital age**.



ITSTI's Areas of Exploration

Sectors

- Education
- Health
- Climate
- Agriculture
- Energy & Mining
- Land
- Insurance
- Financial Inclusion

Emerging Technologies (ETs)

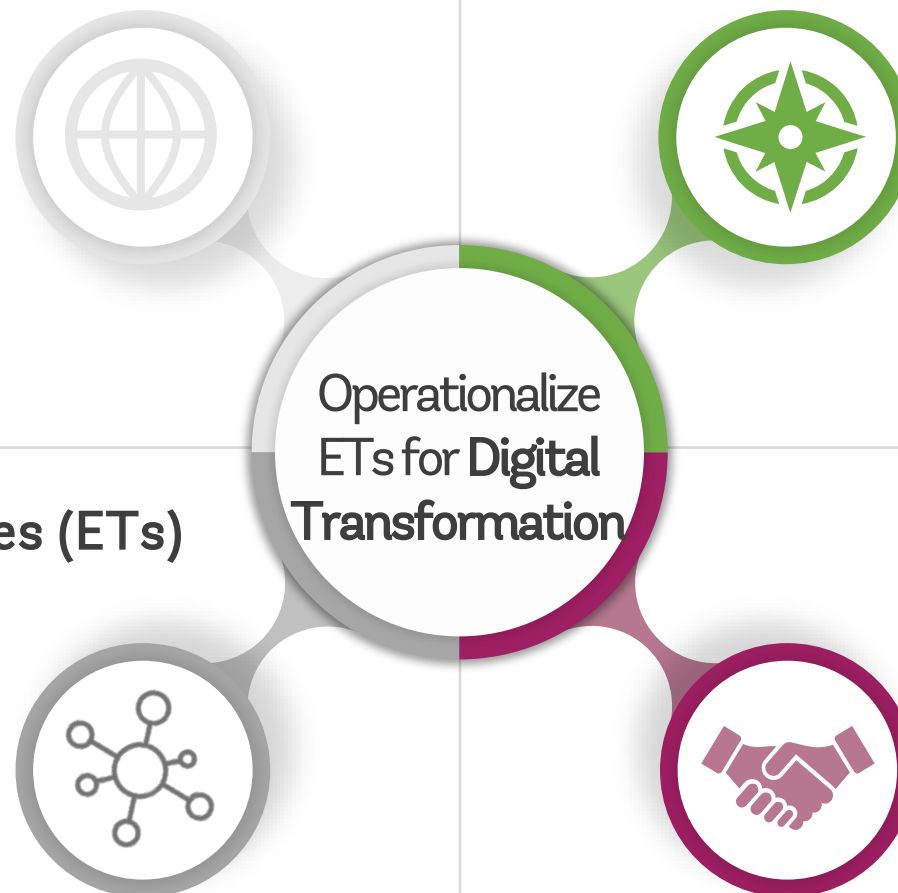
- ▲ Blockchain
- ▲ Artificial Intelligence
- ▲ Internet of Things
- ▲ AR/VR
- ▲ 3D Printing

Themes

- Supply Chain Innovation
- Financial Inclusion
- Tokenization 4 Development
- Results Based Financing
- Identity 4 Development
- Business Model Innovation
- Digital Transformation
- Operational Efficiency

Our Clients

- ◆ WBG Global Practices
- ◆ Internal Operations



Foundational Domains of AI explored by the ITSTI lab

